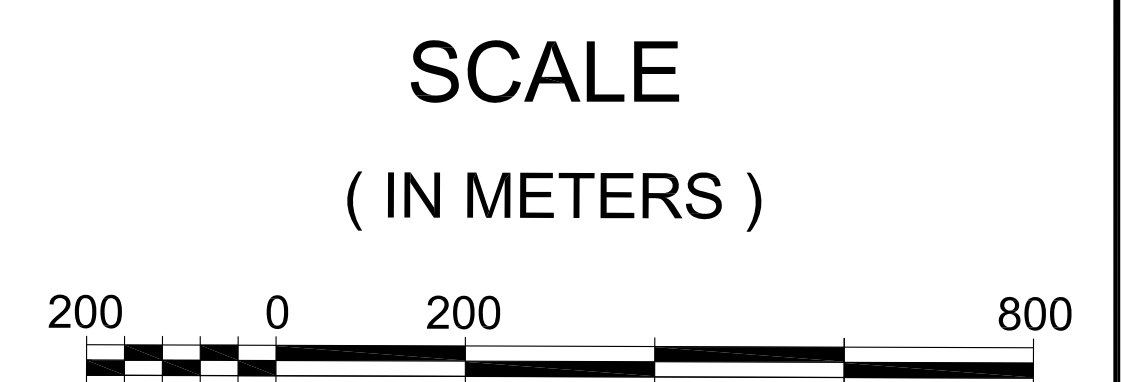
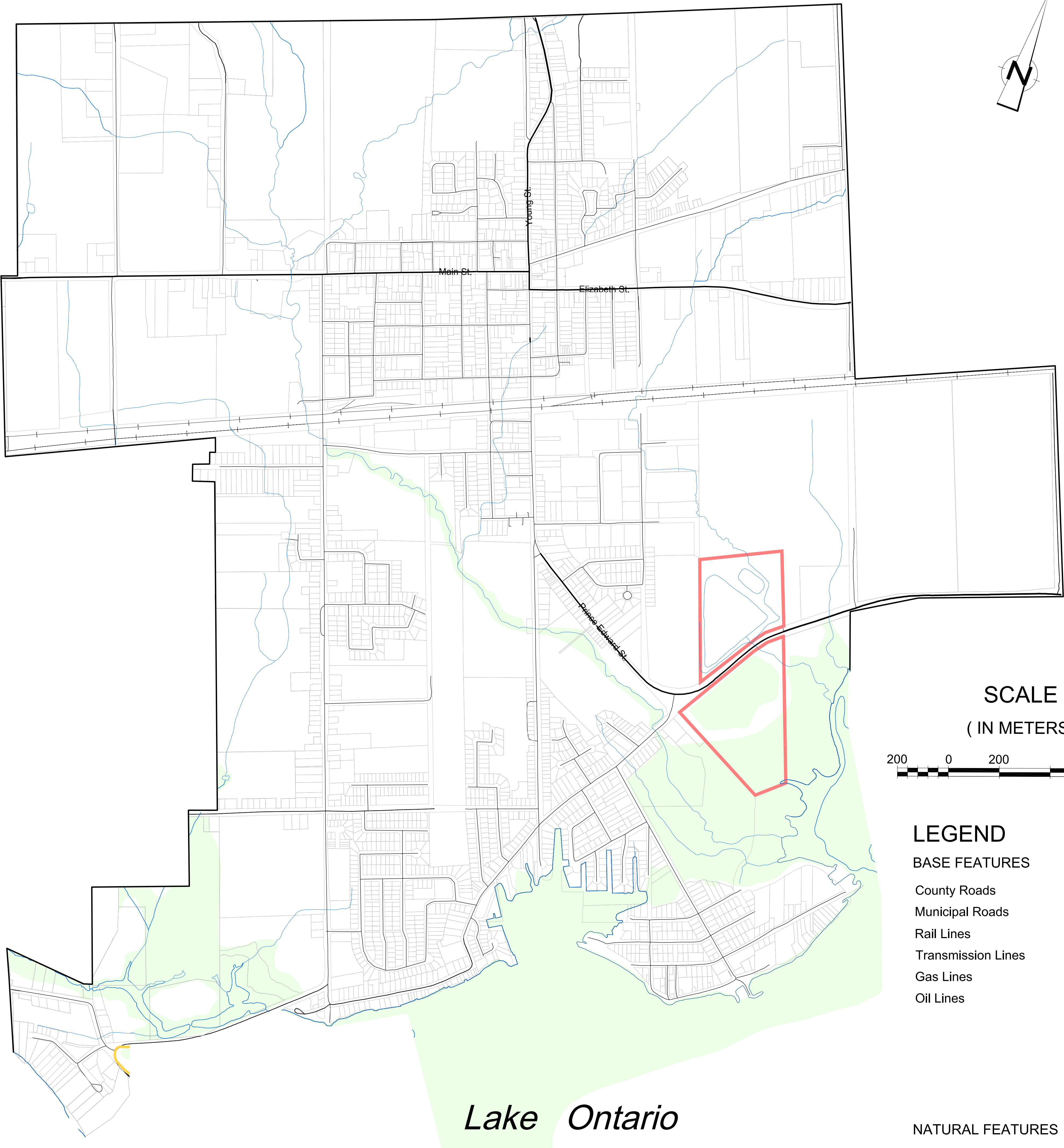
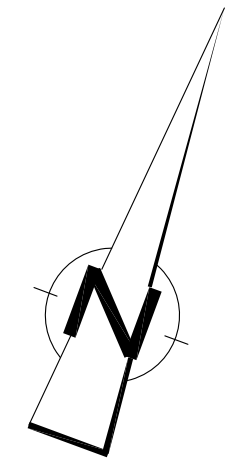



**The Municipality of Brighton**

Schedule "C"  
Natural Features and Resources  
Map 2  
Brighton Urban Area



**LEGEND**


**BASE FEATURES**

- County Roads 
- Municipal Roads 
- Rail Lines 
- Transmission Lines 
- Gas Lines 
- Oil Lines 

**NATURAL FEATURES**

- Provincially Significant Wetlands 
- Locally Significant Wetlands 
- Water Courses 
- Area of Natural and Scientific Interest 
- Licensed Aggregate Areas 
- Water Treatment Plant/Constructed Wetlands and Lagoons 

Revised - MMAH modifications Oct 2013



**EcoVue Consulting Services Inc.**  
25 Reid Street  
P.O. Box 129  
Lakefield, Ontario, Canada K0L 2H0  
Tel: 705-652-8340 Fax: 705-652-1607  
www.ecovueconsulting.com

**PETER A. JOSEPHS & ASSOCIATES**  
PLANNING CONSULTANTS

4 Daleview Avenue  
Peterborough, Ontario K9J 1L5  
Tel: 705-748-2109 Fax: 705-748-2519