

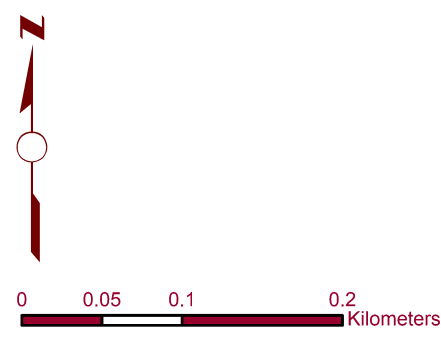
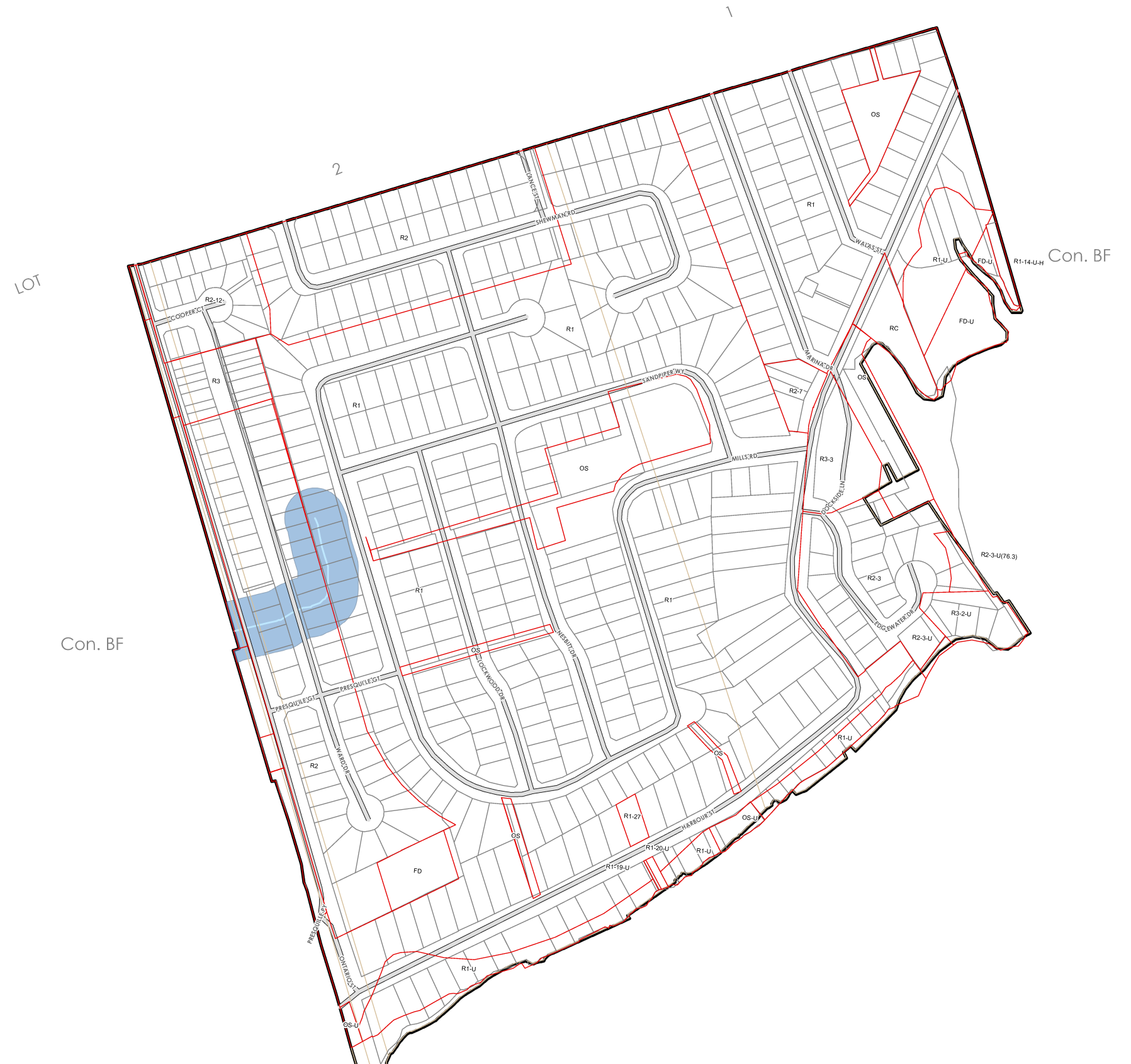
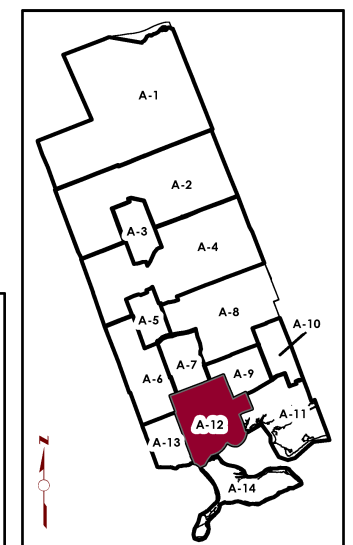
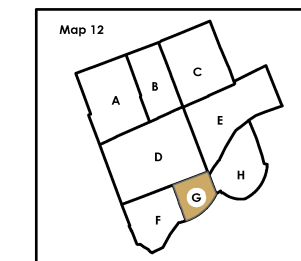
  
**MUNICIPALITY OF BRIGHTON**  
 Municipality of Brighton, Ontario  
**Zoning By-Law**  
**Schedule A Map 12 G**

**Zone Description**

- R1 - Urban Residential One Zone
- R2 - Urban Residential Two Zone
- R3 - Urban Residential Three Zone
- RR - Rural Residential
- HR - Hamlet Residential
- SHR - Shoreline Residential
- LC - Local Commercial
- CA - Core Area Zone
- HC - Highway Commercial Zone
- RC - Recreational Commercial
- M1 - General Industrial
- M2 - Rural Industrial
- EM - Extractive Industrial
- RU - Rural
- A - Agricultural Zone
- OS - Open Space
- CF - Community Facility
- EP - Environmental Protection
- FD - Future Development

- H - Holding
- U - Wave Uprush Requirement
- F ( ) - Flood Proofing Elevation Requirement

-  Floodplain Area Zone
-  Well Head Protection Area Zone
-  Floodprone Area Zone
-  Resource Reserve Area Zone
-  Water Features



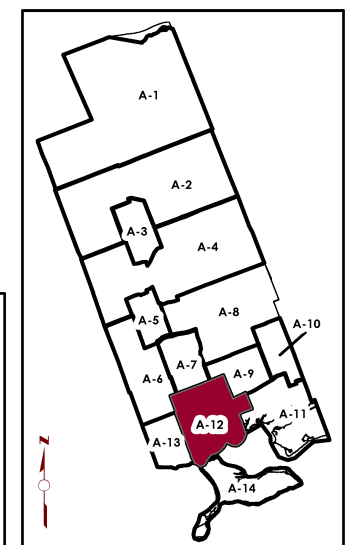
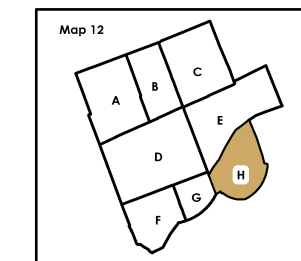
  
**MUNICIPALITY OF BRIGHTON**  
 Municipality of Brighton, Ontario  
**Zoning By- Law**  
**Schedule A Map 12 H**

**Zone Description**

- R1 - Urban Residential One Zone
- R2 - Urban Residential Two Zone
- R3 - Urban Residential Three Zone
- RR - Rural Residential
- HR - Hamlet Residential
- SHR - Shoreline Residential
- LC - Local Commercial
- CA - Core Area Zone
- HC - Highway Commercial Zone
- RC - Recreational Commercial
- M1 - General Industrial
- M2 - Rural Industrial
- EM - Extractive Industrial
- RU - Rural
- A - Agricultural Zone
- OS - Open Space
- CF - Community Facility
- EP - Environmental Protection
- FD - Future Development

- H - Holding
- U - Wave Uprush Requirement
- F ( ) - Flood Proofing Elevation Requirement

-  Floodplain Area Zone
-  Well Head Protection Area Zone
-  Floodprone Area Zone
-  Resource Reserve Area Zone
-  Water Features



December, 2019  
 Created by D.M. Wills Associates Limited  
 In Partnership with  
 Kevin M. Duguay Community Planning and Consulting Inc.





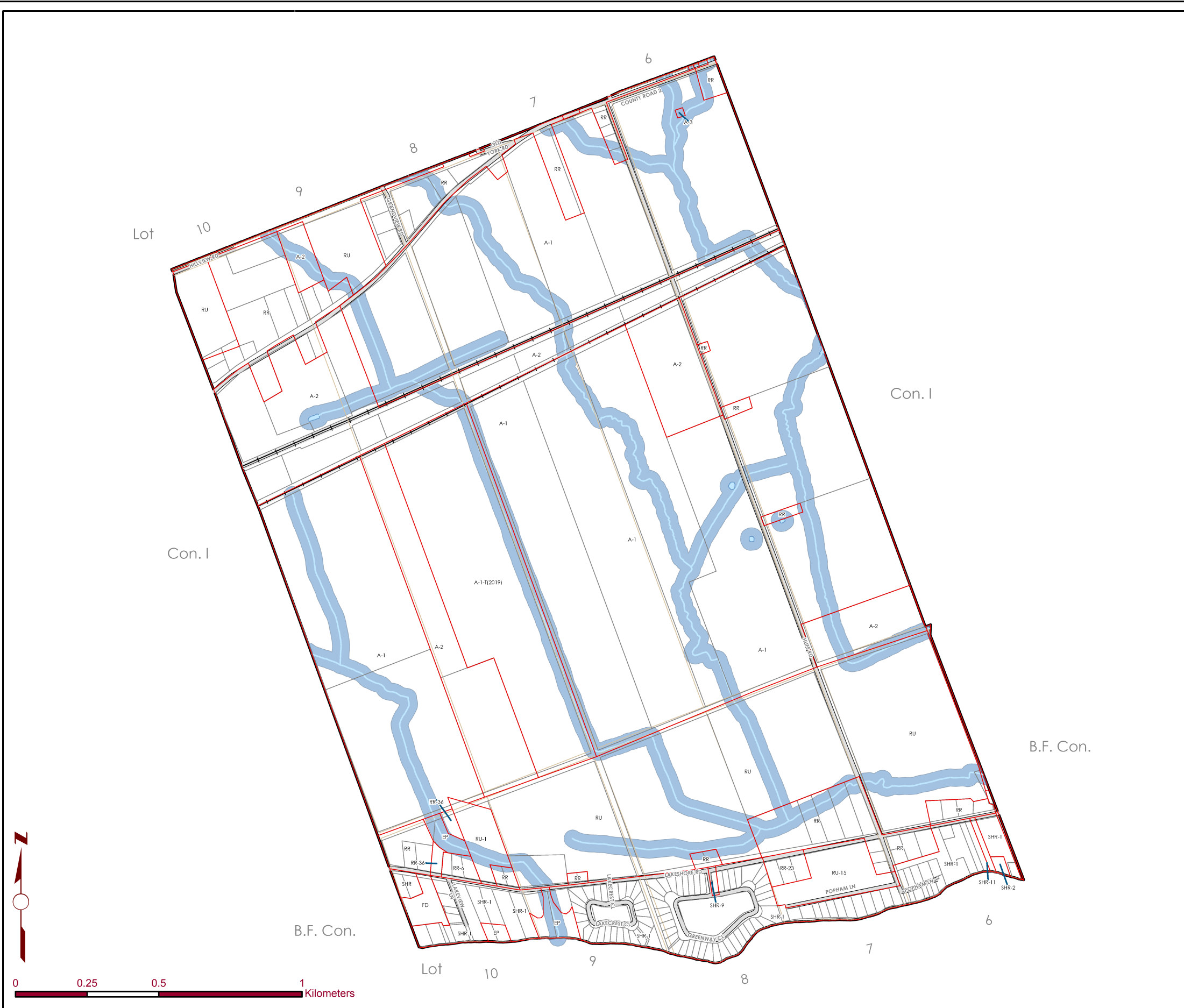
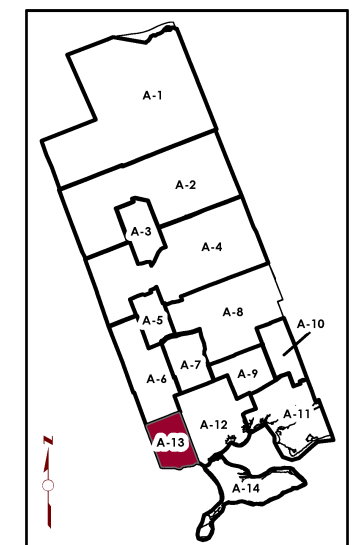
**Municipality of Brighton, Ontario**  
**Zoning By- Law**  
**Schedule A Map 13**

**Zone Description**

- R1 - Urban Residential One Zone
- R2 - Urban Residential Two Zone
- R3 - Urban Residential Three Zone
- RR - Rural Residential
- HR - Hamlet Residential
- SHR - Shoreline Residential
- LC - Local Commercial
- CA - Core Area Zone
- HC - Highway Commercial Zone
- RC - Recreational Commercial
- M1 - General Industrial
- M2 - Rural Industrial
- EM - Extractive Industrial
- RU - Rural
- A - Agricultural Zone
- OS - Open Space
- CF - Community Facility
- EP - Environmental Protection
- FD - Future Development

- H - Holding
- U - Wave Uprush Requirement
- F ( ) - Flood Proofing Elevation Requirement

- Floodplain Area Zone
- Well Head Protection Area Zone
- Floodprone Area Zone
- Resource Reserve Area Zone
- Water Features





**Municipality of Brighton, Ontario**  
**Zoning By- Law**  
**Schedule A Map 14**

**Zone Description**

- R1 - Urban Residential One Zone
- R2 - Urban Residential Two Zone
- R3 - Urban Residential Three Zone
- RR - Rural Residential
- HR - Hamlet Residential
- SHR - Shoreline Residential
- LC - Local Commercial
- CA - Core Area Zone
- HC - Highway Commercial Zone
- RC - Recreational Commercial
- M1 - General Industrial
- M2 - Rural Industrial
- EM - Extractive Industrial
- RU - Rural
- A - Agricultural Zone
- OS - Open Space
- CF - Community Facility
- EP - Environmental Protection
- FD - Future Development

- H - Holding
- U - Wave Uprush Requirement
- F ( ) - Flood Proofing Elevation Requirement

- Floodplain Area Zone
- Well Head Protection Area Zone
- Floodprone Area Zone
- Resource Reserve Area Zone
- Water Features

